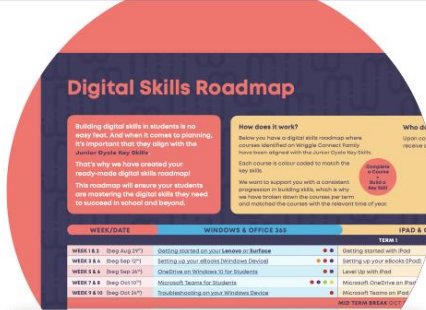


Why Wriggle?

Welcome to our community



10 years supporting Irish schools



Education only focused



Network of 60+ teachers



1,500+ partner schools



30,000 Parents & Students supported annually



6+ World Leading Technology Partners

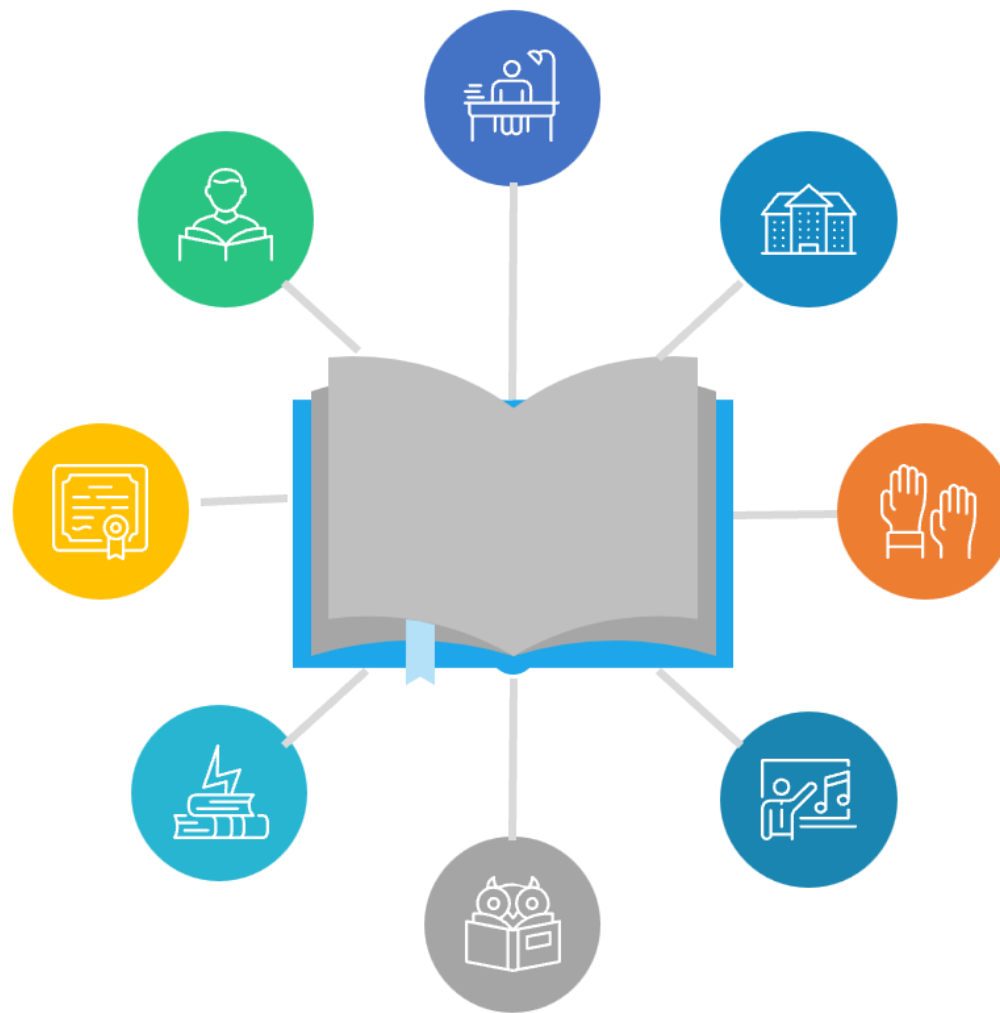
Why schools choose a student device model

◆ Self Directed & Personalised learning

◆ Inclusion & accessibility

◆ Future-ready skills

◆ Efficient workflows



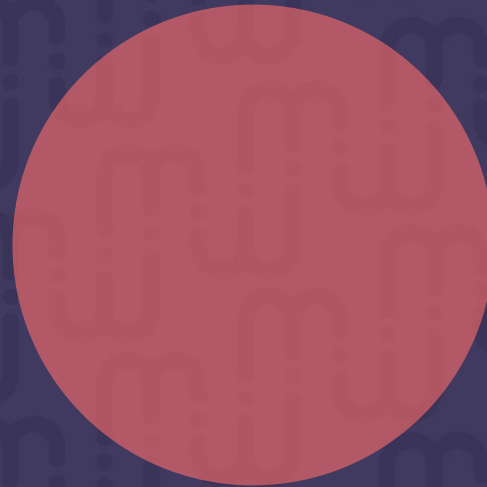
◆ Classroom-based Assessment & Feedback

◆ State Examinations Commission: Senior Cycle reform

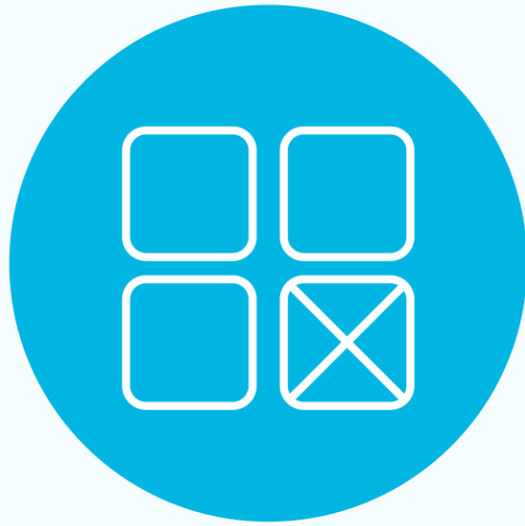
◆ National Digital Strategy 2027

◆ Collaboration & Communication

Setting up, Configuring & Managing Your Devices



Setting up, Configuring & Managing Your Devices



**No Inappropriate
Applications**

+



MDM

+



**Locking Down
Service**

What does it include?

Support



3 YEAR SUPPORT

Technical support via phone and email for parents and students.



DEVICE CONFIGURATION

Bespoke setup and management for each student.



TRAINING

Complimentary access to 1000's of training videos on Wriggle Connect Family.



DEVICE SECURITY

Secure device configuration using MDM to ensure device is for educational use only.



REPAIRS & LOANERS

Management of warranty repairs alongside logistics support. Also, the provision of a device loaner programme for quick swap-out.



3rd PARTY SUPPORT

Support for 3rd party applications such as ASM, Intune, Google Console and Jamf.

What does Wriggle do?

Ensures that your child's device is secured for educational use only, our technology team at Wriggle put your child's device through a 77-step process to make sure that:

- School specific device restrictions are applied to the device to adhere to school policy
- Device is set up with all the apps you need for school, preloaded to your device
- New school apps and updates are automatically pushed to your device for a full *3 years
- Device unlocking in cases where devices become Locked or 'Disabled'
- Warranty repairs and support, 36-month software cover
- Device safety management is in place for *3 years and technical support

Windows

Lenovo 300w



- 11.6" Optimal Touch Screen
- Converts from a Laptop to a Tablet
- Protective Edging
- Up to 10 Hours of Battery Life
- 128GB Storage

Bundle Price Breakdown

	Price	
Device	€529	
Heavy Duty Case	€50	
Wriggle Service & Support (3 years)	€120	
Total	€699	
Insurance (Optional)		€7.99 p/m Approx



To spread the cost of paying for your child's school technology, Wriggle have several payment options

Option to Pay Monthly over 36 Months with no penalties for lump sums or early repayment



Option to work with your own Credit Union



Option to pay by Debit or Credit Card



On-Demand Training in Technology for Parents and Students




<https://family.wriggleconnect.ie/>

Back to school Webinars

Get Back to School Ready with **Wriggle's FREE Webinars**

Ensure you are prepared to use and get the most out of your Windows device that you have invested in for your child's education with our series of free **LIVE** webinars for parents and students during the week of August 22nd – 25th.



Simply click **'Register Here'** to secure your spot. ↓

Date & Time	What to Expect?	Delivered by	Who should attend?	Register
Monday 22nd August, 11am - 12pm	Introduction to your Windows Device and Training	Wriggle Education Team	Students and Guardians/Parents	Click here to register
Tuesday 23rd August, 11am – 12pm	Exploring Cloud Storage & Office 365 Apps	Wriggle Education Team	Students and Guardians/Parents	Click here to register
Wednesday 24th August, 11am – 12pm	Exploring Accessibility features on Windows and Office 365	Wriggle Education Team	Guardians/Parents	Click here to register
Thursday 25th August, 1:00 – 2:00pm	Staying Safe Online with Cyber Safe Kids	Cyber Safe Kids	Students	Click here to register
Thursday 25th August, 7:00pm – 8:00pm	Staying Safe Online with Cyber Safe Kids	Cyber Safe Kids	Guardians/Parents	Click here to register


What will the webinars cover?


- Support with setting up and using your new device
- Guidance on downloading eBooks
- Exploring and setting up accessibility features
- Guidance on safely managing devices at home
- A guide to the full library of supports for parents and students on the Wriggle Connect training platform.

Who should attend?
We strongly advise that all 1st year all 1st year students attend the sessions with a parent / guardian.

Where will the sessions take place?
All webinars will take place via Zoom. You will need to register via Zoom beforehand to receive the joining link to access the webinars.

What do I need to take part in the sessions?
If you can, please use a second device to watch the webinars. This will ensure your Windows devices available to practice along with us. You should also connect to WiFi.







Parent Information Pack

Support

Keep me, I'm Important

Wriggle Parents' Information Pack

Wriggle
Technology for Learning

A guide to purchasing physical books and installing eBooks

Full on-demand access
to 100s of 2 minute tutorials online on safely using child

Wriggle Connect family

To make it easier for you to get all your physical schoolbooks in one place, delivered to your door, Wriggle has partnered with Book Haven, specialists in schoolbooks for over 40 years who will create a unique store for your school containing all of your books.

Purchase all your physical books on your school's Bookhaven store

Click Here

eBooks

To learn more about purchasing physical books and installing eBooks

Click Here

All of these tutorials are available on demand, FREE of charge to your whole family on the Wriggle Connect Family+ platform.

To learn more about Wriggle Connect family

Click Here

family.wriggleconnect.ie

info@wriggleconnect.ie

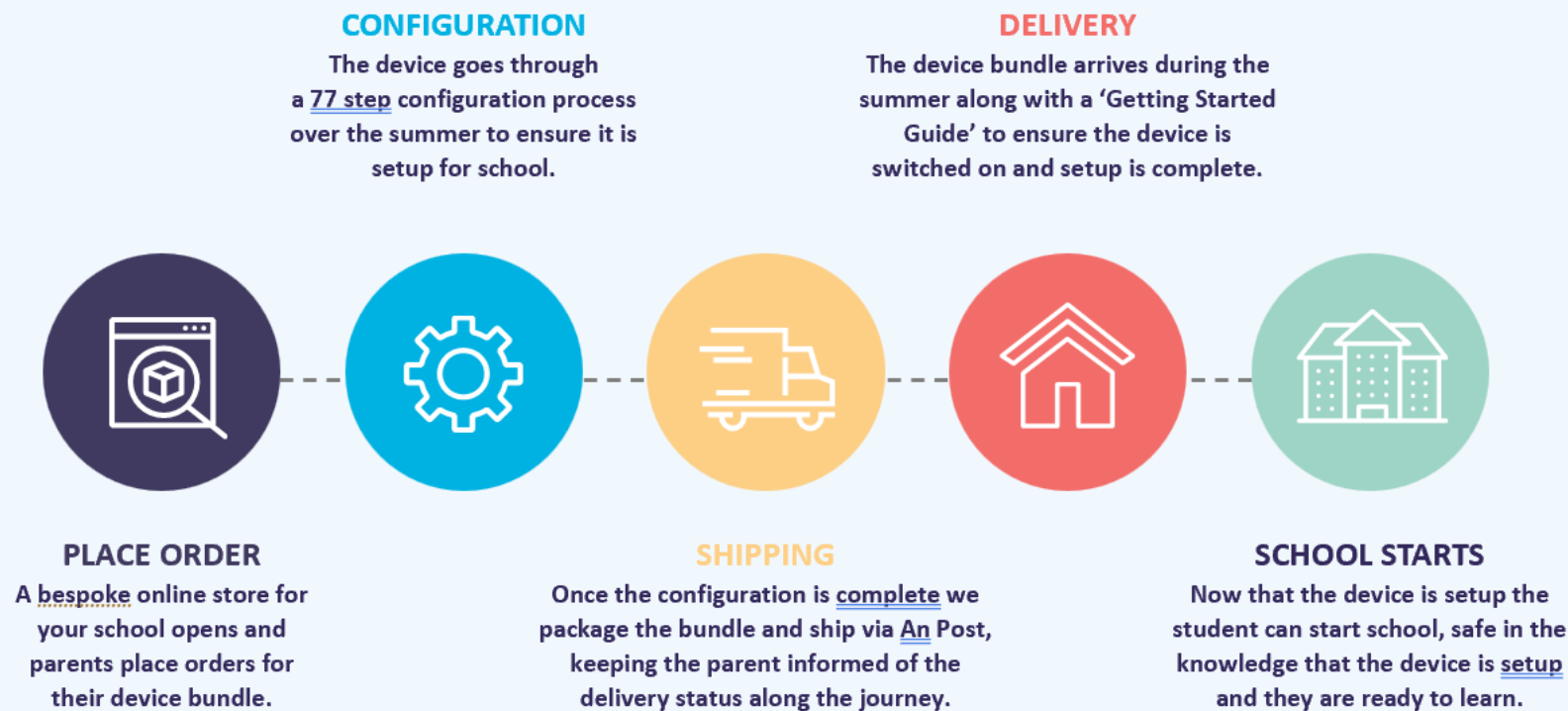
The Ordering Process

Device Build & Deployment

Ordering timeline

HOW THE PROCESS WORKS

Our unique configuration and home delivery deployment, means students can expect to have their device bundle shipped directly to their home within 4-6 weeks from the date their order is placed on our store. Our timeline below illustrates how the process works:



Dates to Remember!

- 1** Online store opens! **2nd April**
- 2** Place Order **ASAP**
- 3** Online store closes **26th May**
- 4** Delivery to home **Woohoo!**

Visit www.wriggle.ie

wriggle

Customer Care



01 5009060

info@wrigglelearning.ie

wriggle